

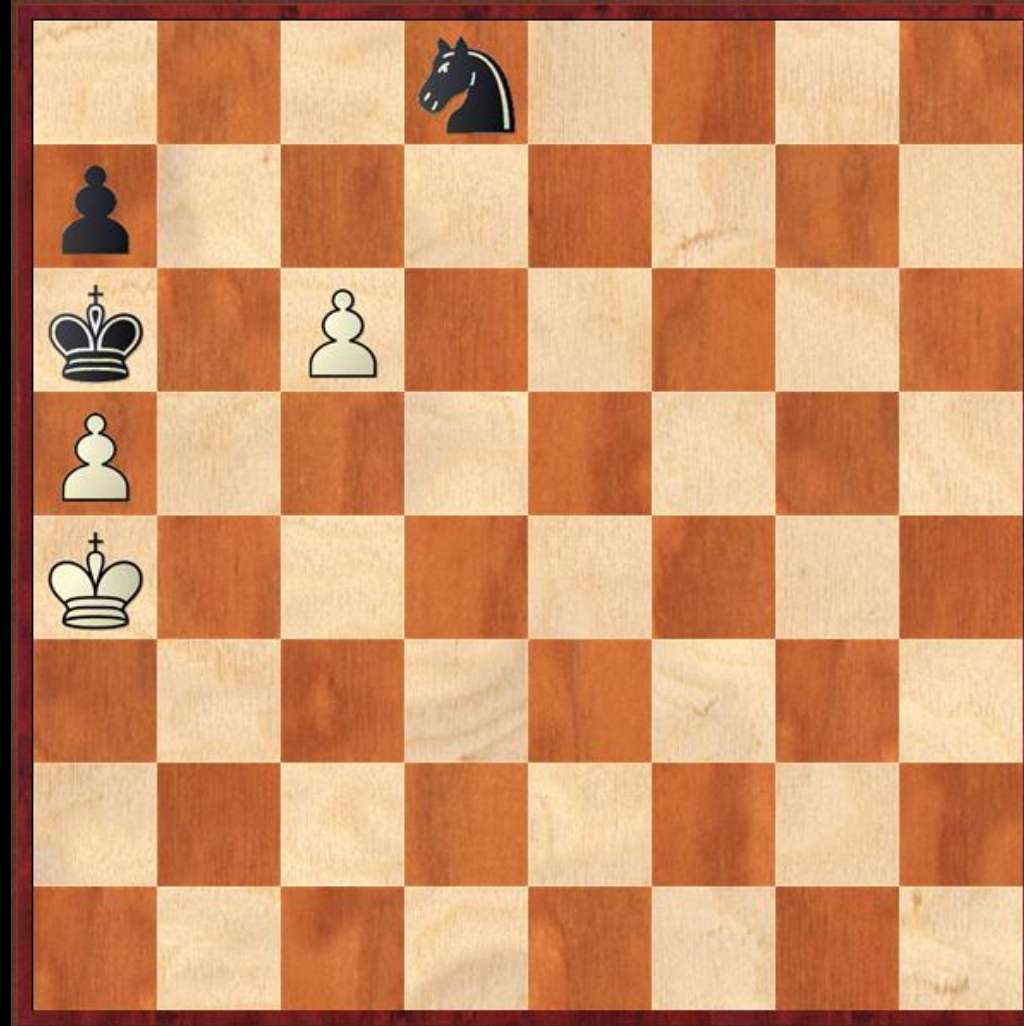
**SATRAŇÇ: OYUN, SPOR, BİLİM VE SANAT**  
**CHES: GAME, SPORT, SCIENCE AND ART**

**Satrançta Açılış İlkeleri**  
**Chess Opening Principles**

**Ergin ÇİFTÇİ**

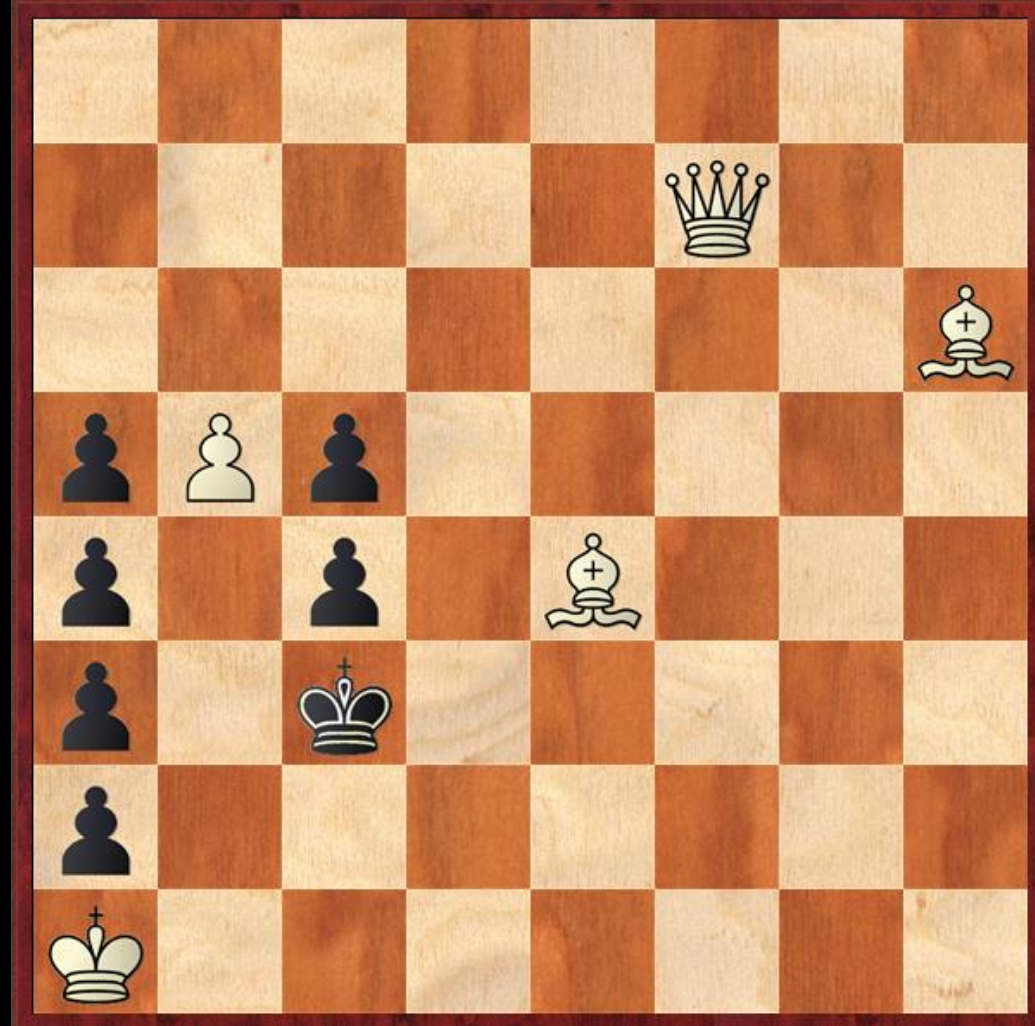
**[www.erginciftci.com](http://www.erginciftci.com)**

**ETÜD**  
**ETUDE**



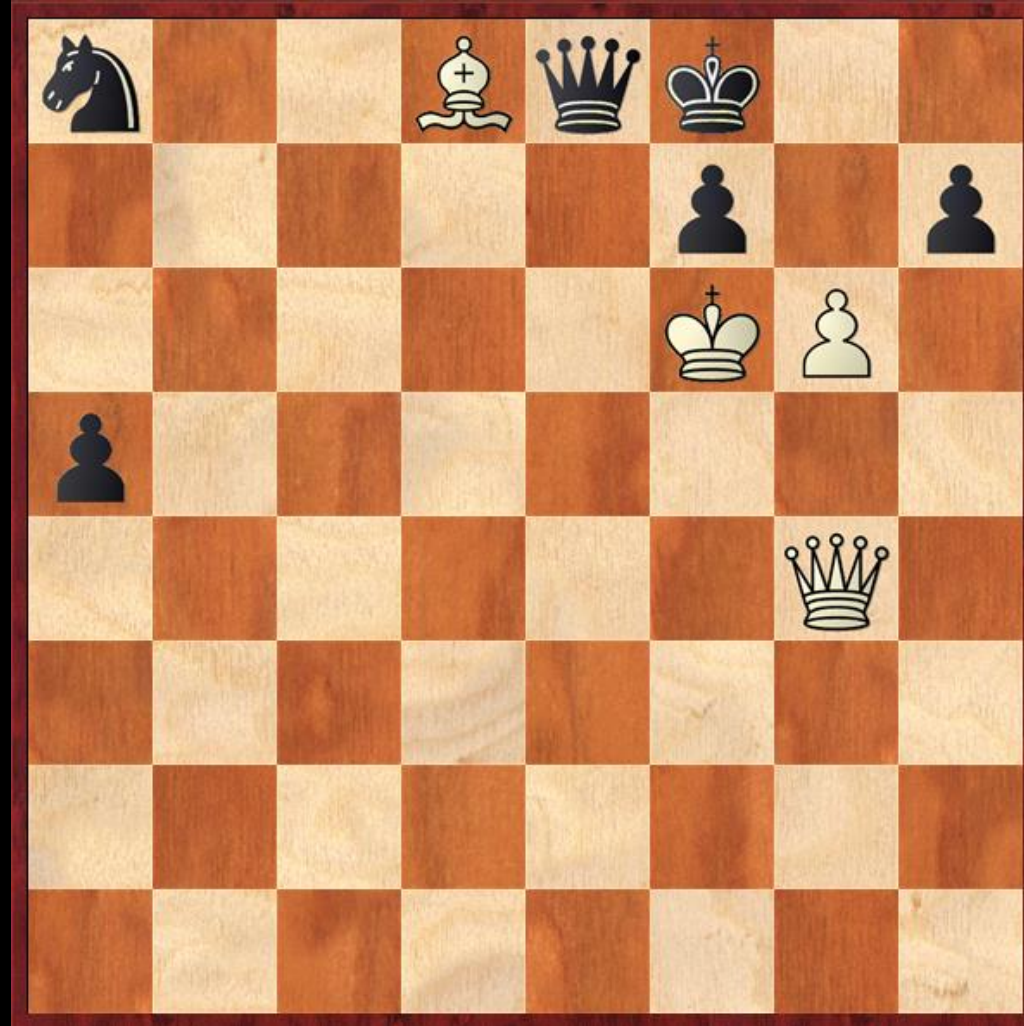
**Beyaz oynar ve kazanır**  
**White plays and wins**

**PROBLEM**  
**PROBLEM**



**Beyaz oynar ve 3 hamlede mat eder**  
**White to move and checkmate in 3 moves**

## KOMBİNEZON COMBINATION



**Beyaz oynar ve kazanır**  
**White plays and wins**

**SATRAŇÇ: OYUN, SPOR, BİLİM VE SANAT**  
**CHES: GAME, SPORT, SCIENCE AND ART**

**Satrançta Açılış İlkeleri**  
**Chess Opening Principles**

**Ergin ÇİFTÇİ**

**[www.erginciftci.com](http://www.erginciftci.com)**



## Judit Polgar

Judit Polgar is widely regarded as the strongest female chess player of all time. She achieved a peak rating of 2735 and earned the title of Grandmaster in 1991. At the height of her career, Polgar made her way onto several top 10 lists of best active chess players – male or female. She has never competed in the [Women's World Chess Championship](#), preferring to focus her attention on the open World Chess Championship. Her best performance there was in 2005, when she came in 8th place.

Judit Polgar is the only woman to have ever won a match against reigning world champion, and has defeated eleven total current or former world champions in either rapid or classical chess, including Magnus Carlsen, Anatoly Karpov, Garry Kasparov, Vladimir Kramnik, Boris Spassky, Vasily Smyslov, Veselin Topalov, Viswanathan Anand, Ruslan Ponomarev, Alexander Khalifman, and Rustam Kasimdzhanov. You go, girl!





Judit Polgar



# Chess Queen

МГ Александра Костенюк / GM Alexandra Kosteniuk

 /alexandrakosteniuk  /chessqueen





**Betül Cemre Yıldız**



**Kübra Öztürk**



**Ekaterina Atalık**



**Nilüfer Çınar Çorlulu**



**Satrançta her aşama çok önemlidir!**

**Every stage is very important in chess!**

**1. Açılış Opening**

**2. Oyun ortası Middlegame**

**3. Oyun sonu Endgame**

**Satrançta iyi bir açılış yaparak oyun ortasına ve oyun sonuna avantajlı bir geçiş yapmak amaçlanmalıdır.**

**By making a good opening in chess, it should be aimed to make an advantageous transition to the midgame and endgame.**

**Satrançta açılışın 3 temel kuralı:**

**Three basic rules of opening in chess:**

**1. Taşlarınızı olabildiğince hızlı biçimde geliştirin**

**Develop your pieces as fast as possible.**

**2. Merkezi ele geçirmeye çalışın**

**Try to control the centre**

**3. Şah'ınızın güvenliğini sağlayın**

**Ensure the safety of the king**

# Satrançta hangi açılış en iyidir?





# Satrançta hangi açılış en iyidir?

## Which opening is the best in chess?

Chess Opening Explorer

help back-up new line flip board

Your starting point to a universe of chess opening exploration.



White to move  
1,162,709 games • 1475-2022

move	games	white wins - draws - black wins %
1. e4	542,458	37.6% 32.5% 29.8%
1. d4	408,444	37.6% 35.9% 26.5%
1. Nf3	108,609	37.2% 38.1% 24.7%
1. c4	83,162	38% 36.7% 25.3%
1. g3	7,256	37.7% 35.2% 27.1%
1. f4	4,222	34.4% 23.9% 41.7%
1. b3	4,104	38.5% 28.1% 33.4%
1. Nc3	1,421	36.3% 24.8% 38.9%
1. b4	987	32.9% 22.7% 44.4%
1. e3	551	32.8% 22.5% 44.6%
1. g4	358	48% 39.7%
1. d3	341	32.6% 26.1% 41.3%
1. a3	334	35.6% 22.2% 42.2%
1. c3	187	35.8% 24.6% 39.6%
1. h3	57	49.1% 21.1% 29.8%
1. f3	42	40.5% 50%
1. Na3	30	66.7% 28.7%
1. Nh3	27	59.3% 29.6%
1. h4	20	45% 45%
1. a4	17	29.4% 41.2% 29.4%

1.c4 +0.18 (37 ply) Engine Notes

OPENING DESIGNATIONS:  
No opening designation available. Make a few more moves.

FEN:

URL:

Opening Explorer  
Copyright © 2003-2019 by Chessgames.com

< BACK ONE HALF-MOVE

## **Taşların geliştirilmesi:**

### **Development of pieces:**

- 1. Oyun piyonların Fillere yol açması ile başlayabilir.**  
The game may begin with the pawns giving way to the Bishops.
- 2. Atlar ve Filler ilk geliştirilmesi gereken taşlardır.**  
Knights and Bishops are the first stones to be developed.
- 3. Vezir ve Kale daha sonra geliştirilmelidir.**  
Queen and Rook must be developed later.
- 4. İki kalenin bağlantısı sağlanmaya çalışılmalıdır**  
It is necessary to try to connect the two rooks.
- 5. Filler açık çaprazlara yerleştirilmelidir.**  
Bishops must be placed in open diagonals.
- 6. Kaleler açık yatay ve dikeylere yerleştirilmelidir.**  
Rooks must be placed on open horizontal and vertical files.
- 7. Gereksiz piyon sürüşü yapılmamalıdır.**  
Unnecessary pawn moves should not be done.
- 8. Aynı taşla birden fazla hamle yapılmamalıdır.**  
Multiple moves should not be made with the same piece.

**Merkezin ele geçirmesi:**

**Center control:**

- 1. Tahtada merkez kontrolünü sağlayan oyuna hakim olabilir.**  
Whoever has central control on the board can dominate the game.
- 2. Merkezde piyonlarınızı bulundurmaya çalışın.**  
Try to keep your pawns in the center.
- 3. Diğer taşlar merkezi uzaktan da kontrol edebilir.**  
Other pieces can also control the center remotely.

**Şah güvenliğinin sağlanması:**

**Ensuring the security of the King:**

**1. Şah ortada kaldığında saldırılara açık haldedir.**

**When the King is in the middle, he is open to attacks.**

**2. Şah'ınızın güvenliğini en kolayca rok yaparak sağlayabilirsiniz.**

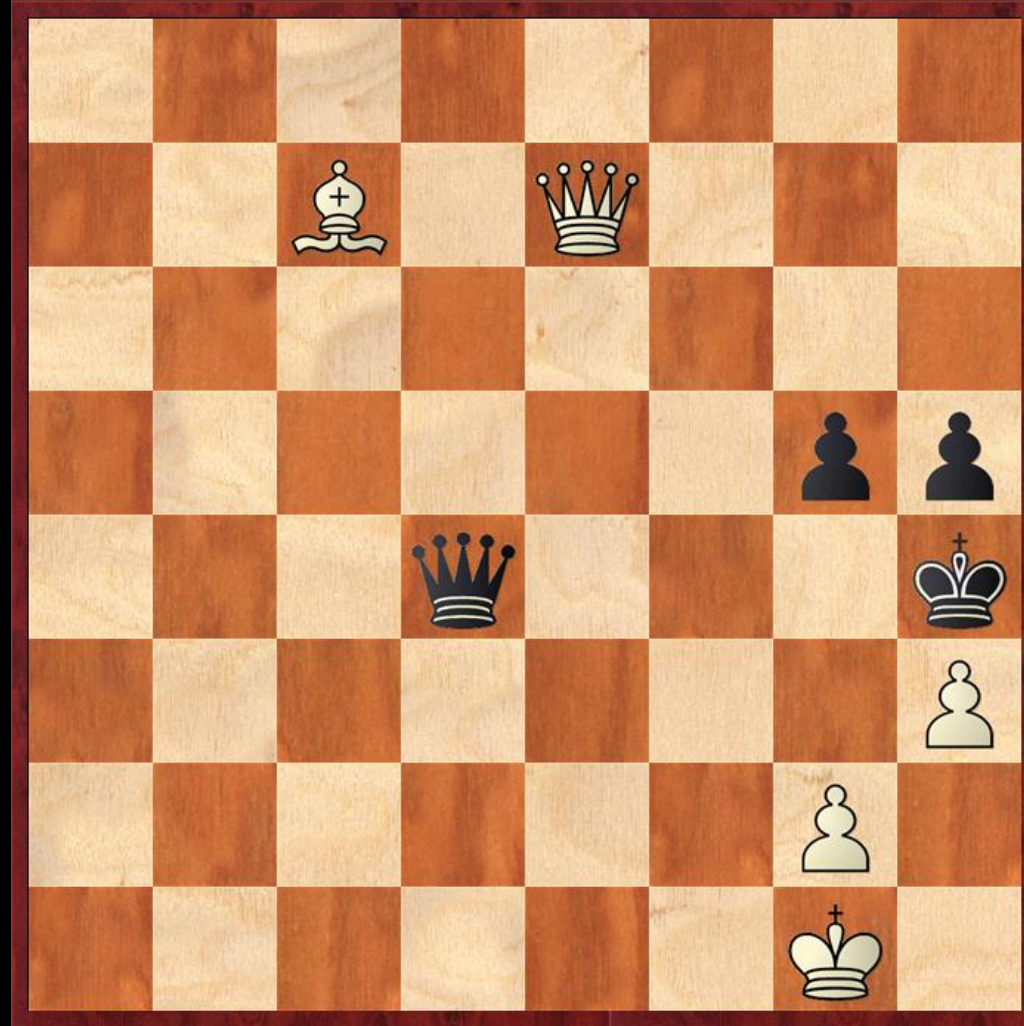
**You can ensure the safety of your King most easily by castling.**

**3. Rok yapmanız güvenli görünmüyorsa rok yapmayı geciktirebilir veya hiç rok yapmayabilirsiniz.**

**If it does not seem safe to castling, you may delay casting or not castle at all.**



**ETÜD**  
**ETUDE**



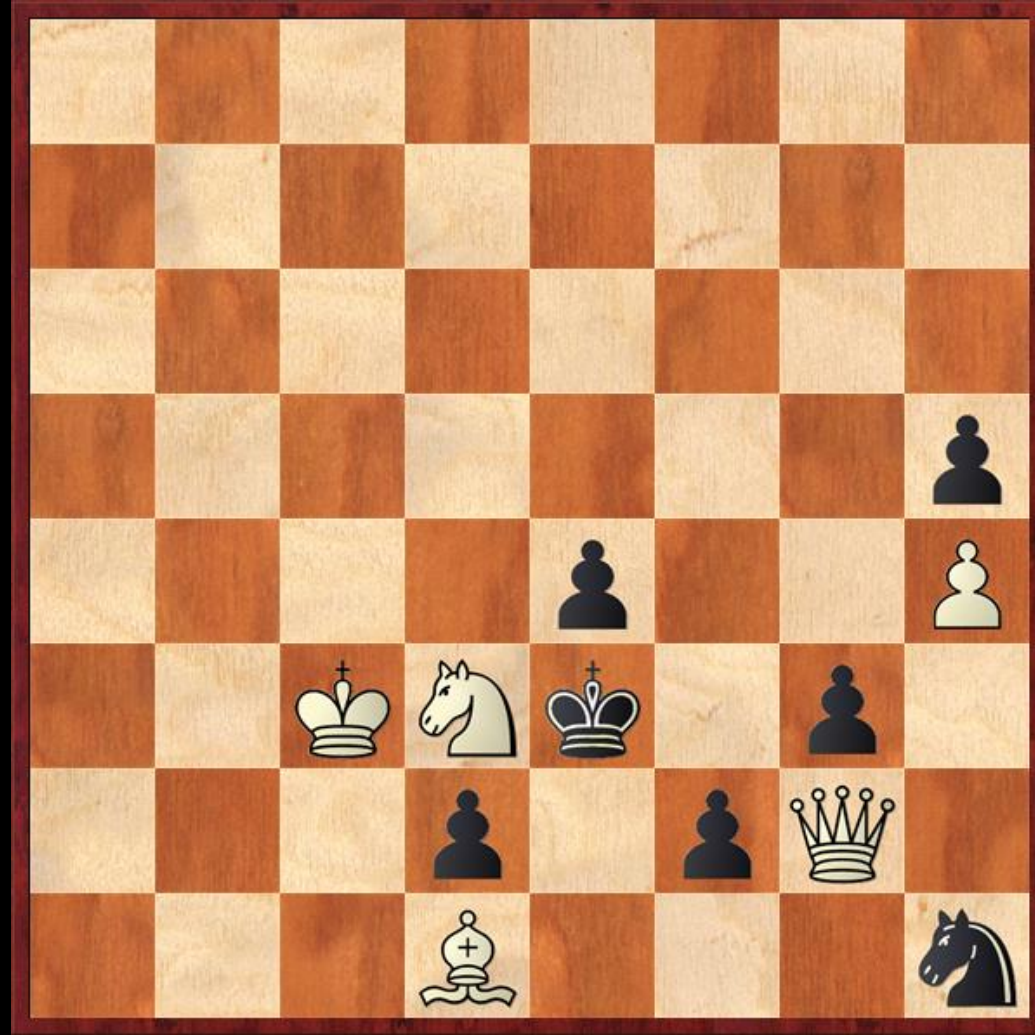
**Beyaz oynar ve kazanır**  
**White plays and wins**

The chessboard diagram shows an 8x8 grid with alternating light and dark squares. The pieces are positioned as follows:

- White pieces: King at c1, Rook at c2, King at c3, Rook at c4.
- Black pieces: Pawn at d2, Pawn at d3, Pawn at d4.

**Beyaz oynar ve kazanır**  
**White plays and wins**

**PROBLEM**  
**PROBLEM**



**Beyaz oynar ve 2 hamlede mat eder**  
**White to move and checkmate in 2 moves**